

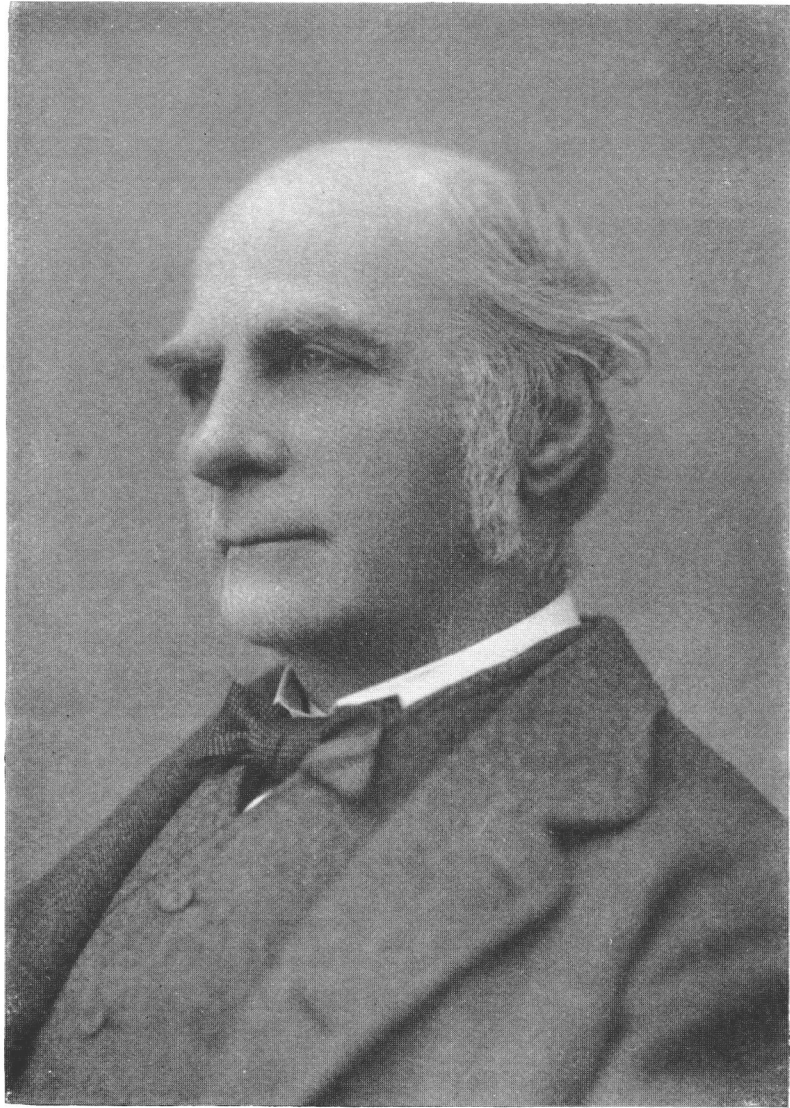
THE
LIFE, LETTERS AND LABOURS
OF
FRANCIS GALTON

BY
KARL PEARSON
GALTON PROFESSOR, UNIVERSITY OF LONDON

VOLUME III^B
CHARACTERISATION, ESPECIALLY BY LETTERS
INDEX

CAMBRIDGE
AT THE UNIVERSITY PRESS

1930

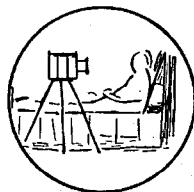


Francis Galton, when about 75 years of age.

ILLUSTRATIONS TO VOLUME III^B

Frontispiece. Francis Galton, when about 75 years of age

PLATE	<i>to face page</i>
XLIII. Francis Galton's Room at Trinity College, Cambridge	453
XLIV. From Galton's Egyptian Sketchbook. Bob, aged 10, left in charge; Ibrahim	454
XLV. From Galton's Syrian Sketchbook. Ali, Galton's servant in Palestine and Syria	454
XLVI. d'Arnaud Bey, a sketch from a photograph	455
XLVII. Water-colour Sketch of Francis Galton in the Fallow Years	456
XLVIII. Francis Galton's Niece Milly—Mrs J. C. Baron Lethbridge	471
XLIX. Francis Galton, the Meteorologist, when about 65 years of age	472
L. The Medallion of Erasmus Darwin by Fassie	473
LI. Facsimile of one of Francis Galton's weekly letters to his Sister Emma, 1893	494
LII. Francis Galton, aged 75. Royat, July, 1897	502
LIII. Francis Galton's Great-Niece Evelyne Biggs—Mrs Guy Ellis	507
LIV. Experiment of Francis Galton on the exhibition of all aspects of a bust on a single negative	520
LV. (i) "Sister Emma"; (ii) Francis Galton as Geographer; (iii) Francis Galton's Mother	531
LVI. Galtonia (<i>Hyacinthus candicans</i>) from tropical South Africa	534
LVII. Sample of the conventionalised Finger-Print Ornamentation on the Stones at Gavr'inis, from the series of photographs in the <i>Galtoniana</i>	543
LVIII. Francis Galton and his Great-Niece, Evelyne Biggs, at Bridge End, Ockham, in August, 1906	576
LIX. The Rock on the Lake at Otchikoto, Ovampoland, where Galton's name can still be read, inscribed in 1851	617



Specimen of Galton's Annual Medallions commemorating an event of the year. This marks the year in which he obtained composite photographs of the tuberculous patients at Guy's Hospital.

PRINTED IN GREAT BRITAIN



Bookplate of Samuel Tertius Galton.